

JVC[®]

The Perfect Experience / —

42-INCH PLASMA DISPLAY

GD-V422PCE

Billion Colour XGA Plasma Display
Automated Operation for Ease-of-Use

Excellent Picture Quality and Usability



Plasma Solutions for Professional Applications

Make a Big Impression with XGA Plasma Performance

JVC's GD-V422PCE plasma display features an XGA panel which has the capability to reproduce 1.07 billion colours. This gives amazingly realistic images and with a variety of P in P (Picture-in-picture) functions, plus digital zoom and multi-display facilities, you can be sure of making a lasting impression on any audience.

XGA panel

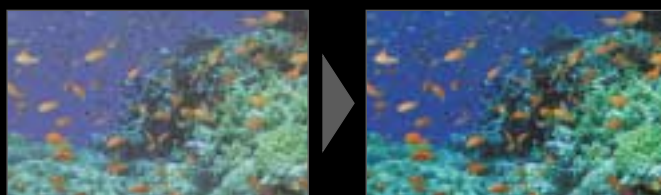
The native resolution of the GD-V422PCE is XGA (1024 horizontal by 768 vertical pixels). The panel is made from highly durable glass material. Besides the high quality of the panel itself, the GD-V422PCE employs numerous, innovative image enhancement technologies which all contribute towards very realistic image reproduction.

Advanced Digital Image Processing

The image processing circuitry of the GD-V422PCE is entirely digital and is therefore able to deliver a quality of image that is the equal of the display qualities of the panel itself. Additionally, the process of enhancing the luminance level gives sharpness, clarity and true colour definition. The result is absolute fidelity of image reproduction.

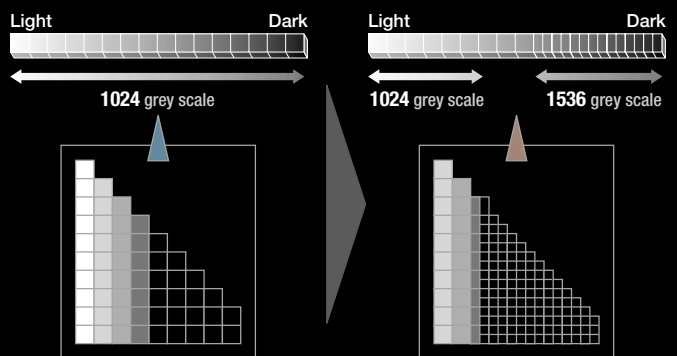
More Than One Billion Colours

The GD-V422PCE has a palette of 1.07 billion colours which is one of the highest available. This means that the panel can display very rich colours and also images that contain subtle colour differences. Moreover, for the darker areas of an image the panel has a greyscale of 1356 gradations which allow the details to be shown from areas of low luminance. By offering such marked and significant improvements in these aspects of image reproduction, the GD-V422PCE provides a picture quality previously unseen on plasma panels. The splendid array of rich and subtle colours, the fine detail visible in dark areas and the overall reduction in noise make for superb and realistic picture quality.



▲ Conventional gamma

▲ GD-V422PCE gamma

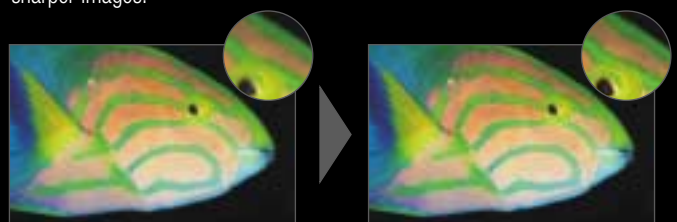


High contrast ratio – 4000:1 for dark surroundings

The GD-V422PCE can display images with high contrast, 4000:1 for areas that are dark, and 160:1 for areas that are bright. This enables a more realistic picture with three-dimensionality and sharpness.

2D Enhancer LSI

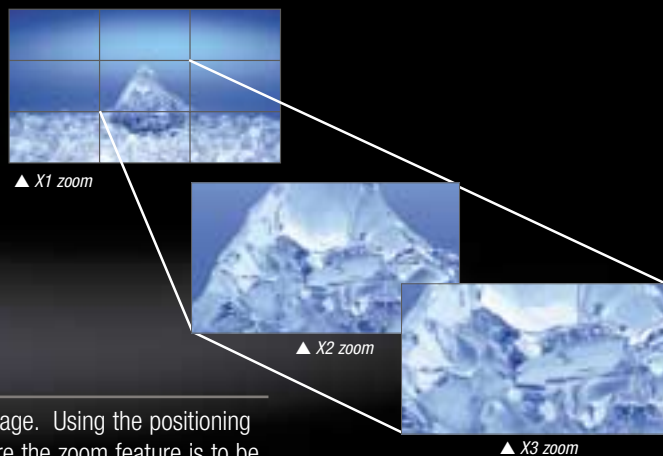
Noise generation caused by edge and contour correction is now a problem of the past. The GD-V422PCE comes equipped with a two-dimensional LSI enhancement circuitry that seriously reduces edge noise and so gives crisper, sharper images.



▲ Conventional

▲ 2D enhancer

Images are simulated to show the difference.

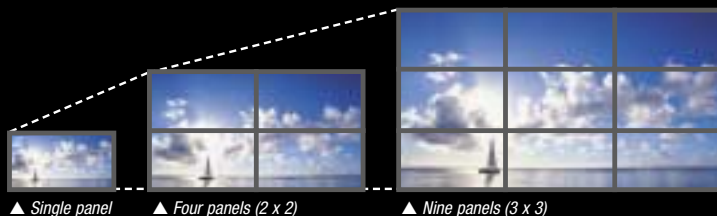


Digital Zoom

This feature allows enlargement of a designated part of the displayed image. Using the positioning buttons on the remote control, the cursor can be moved to pinpoint where the zoom feature is to be applied. Magnification is available in 3 steps, from 1x to 3x, at the press of a button.

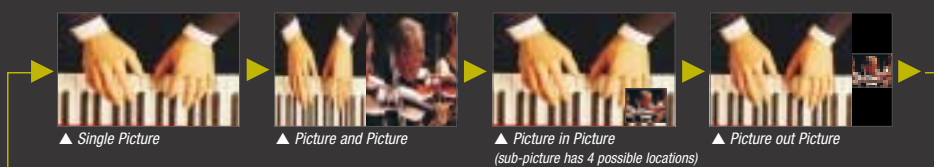
Multi-Display Capability

This feature allows a cluster of 4 or 9 panels to display one single picture. Such 2x2 and 3x3 panel displays are particularly eye-catching in exhibitions or tradeshows.



Multi P in P

The GD-V422PCE has, besides single picture display, three different ways of displaying a second input (sub-picture): Picture-and-Picture, Picture-in-Picture, and Picture-out-Picture.

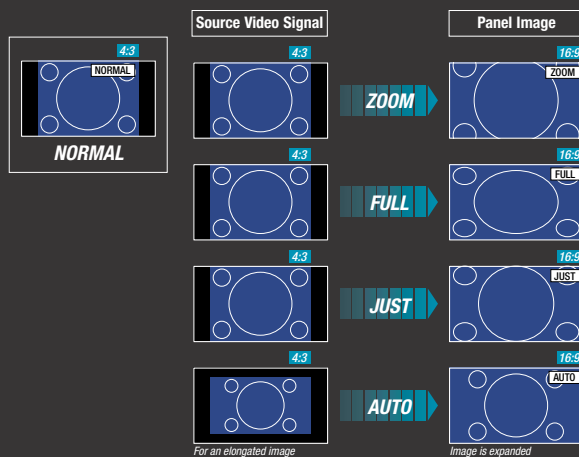


Aspect Controls

There are five aspect controls that can be cycled through and selected.

- NORMAL** will display a 4:3 picture at its standard 4:3 size.
- ZOOM** mode magnifies the central section of the picture.
- FULL** 16:9 will display the picture at its maximum size but with slight elongation.
- JUST** mode will display a 4:3 picture at its maximum size but with aspect correction applied to the centre of the screen so that elongation is only apparent at the left and right edges of the screen. The size of the picture will depend on the original signal.
- AUTO** The display will automatically become enlarged (depending on the picture source), allowing you to view the picture at its maximum size.

Note: AUTO mode is designed to automatically adjust the aspect ratio to handle a mix of 16:9 and 4:3 program materials. Certain 4:3 program materials, such as stock market data screens, may occasionally cause the image size to change unexpectedly. When viewing such programs, it is recommended that the ASPECT be set to NORMAL.



Specifications

DISPLAY PANEL

Screen size	W x H	920 x 518 mm
	Diagonal	1,056 mm (41.6 inches)
No of pixels		786,432 (1024 W x 768 H; 3,072 x 768 dots)
Type		Widescreen 42-inch diagonal
Aspect ratio		16:9 (4:3/16:9 switchable)
Display colors		1.07 billion
Brightness		5000cd/m ²
Contrast ratio		4000:1 in dark areas, 160:1 in bright areas
Display modes	Normal	4:3 image displayed in centre of screen
	Auto	Image enlarges automatically (depending on the picture source) for viewing the picture at its maximum size.
	Full	16:9 image at its maximum size but with slight elongation.
	Just	4:3 image at its maximum size but with aspect correction applied to the centre of the screen so that elongation is only apparent at the left and right edges of the screen. The size of the picture will depend on the original signal.
	Zoom	4:3 image magnified in centre of screen
Signal format capability		Refer to the table below
External I/O configuration/signals	IN (fixed) PC	XGA: Multiscan format *DD C1/2B compatible
		Compatible frequency: (H) 15 kHz – 110 kHz, (V) 48 Hz – 120 Hz HD, VC (mini D-sub 15-pin): 1.0 – 5.0 V (p-p), high impedance
impedance		Audio L/R (M3 jack): 0.5 V (RMS), high impedance
	Serial	External control terminal (D-sub, 9-pin), RS-232C compliant
	External speaker	Left/Right, 6 ohms
Audio power output	External	8W + 8W (6 ohms, 10% THD)
Weight		29.5 kg

GENERAL

Power requirement		220 – 240V AC, 50/60Hz (±10%)
Power consumption		335 W (1.1 W with stand by save ON)
Operating environment conditions	Temperature range	0° C – 40° C
	Humidity range	20% – 80%

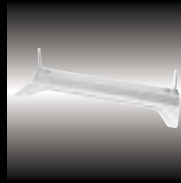
Applicable Signal Formats

Signal	Frequency		RGB	PC	During Multi Screen/ Digital Zoom
	H (kHz)	V (kHz)			
640 x 400 @70	31.47	70.00	•	•	•
640 x 480 @60	31.47	59.94	•	•	•
Macintosh 13" (640 x 480)	35.00	66.67	•	•	•
640 x 480 @75	7.50	75.00	•	•	•
800 x 600 @60	37.88	60.32	•	•	•
800 x 600 @75	46.88	75.00	•	•	•
800 x 600 @85	53.67	85.06	•	•	•
Macintosh 16" (832x624)	49.73	74.55	•	•	•
1,024 x 768 @60	48.36	60.00	•	•	•
1,024 x 768 @70	56.48	70.07	•	•	•
1,024 x 768 @75	60.02	75.03	•	•	•
1,024 x 768 @85	68.68	85.00	•	•	•
Macintosh 21" (1,152x870)	68.68	75.06	•	•	•
1,280 x 1,024 @60	63.98	60.02	•	•	•
1,280 x 1,024 @75	79.98	75.03	•	•	•
1,280 x 1,024 @85	91.15	85.02	•	•	•
1,600 x 1,200 @60	75.00	60.00	•	•	•

Note: • PDP is an ultra-modern electronic device fabricated using leading-edge technology. Therefore, its effective picture elements are 99.9 percent or more, meaning 0.01 percent or less effective elements or "always ON" portion could exist. • Screen burn-in: Like a CRT, PDP uses phosphor; therefore burn-in could result from long-term use such as displaying the same still picture.

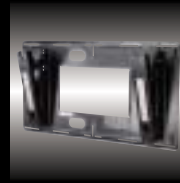
E. & O.E. Design and specifications are subject to change without notice. All brand or product names may be trademarks and/or registered trademarks of their respective owners. Any rights not expressly granted herein are reserved. * Certain accessories may not be available in certain areas. Copyright © 2004 Victor Company of Japan, Limited (JVC). All Rights Reserved.

Optional Accessories



Stand Unit
TS-C50P5G

Dimensions
(W x H x D):
500 x 607.2 x 700 mm



Wall Mount Unit
TS-C50P2G
(Adjustable angle)

Wall Mount Unit
TS-C50P6G
(fixed angle)
* TS-C50P2G shown



Ceiling Mount Unit
TS-C50P3G



Side Mount Slim
Speakers
TS-C422SPG

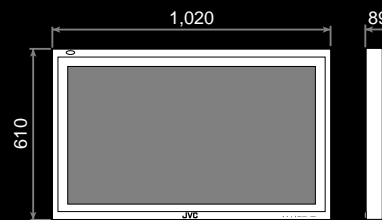
Accessory Provided



Remote Control Unit

Dimensions

Unit: mm



JVC®

DISTRIBUTED BY

Printed in Japan
ICN-0292

"JVC" is the trademark or registered trademark of Victor Company of Japan, Limited.